

## Design 70-V Sliding door fitting

For door weights up to 70 kg

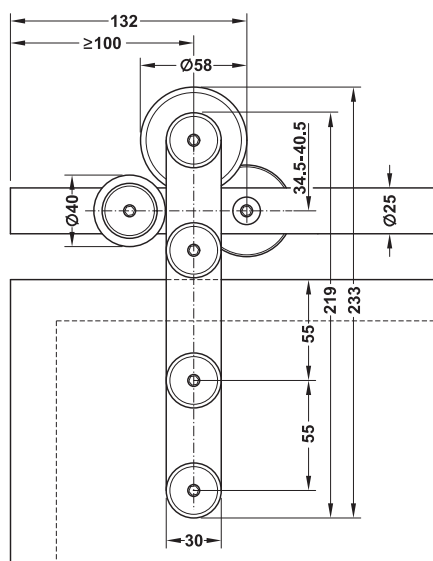


Clamped door connection



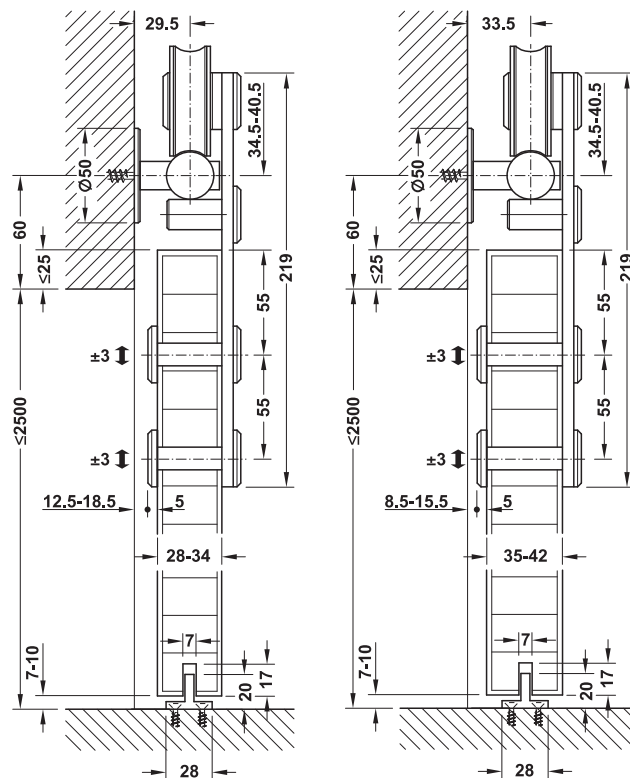
Recessed door connection

- Area of application: For 1-leaf sliding doors
- Version: Running gear with anti-derailment device, floor guide adjustable
- Adjustment facility: Door height adjustable  $\pm 3$  mm
- For wood thickness: 28 – 42 mm
- Door weight:  $\leq 70$  kg per door
- Diameter: Tubular track 25 mm
- For internal opening width:
  - With running track 1,804 mm: 750 – 900 mm
  - with running track 2,104 mm: 910 – 1,000 mm
- For door width:
  - With running track 1,804 mm: 800 – 950 mm
  - with running track 2,104 mm: 960 – 1,050 mm



Running gear with clamp fitting

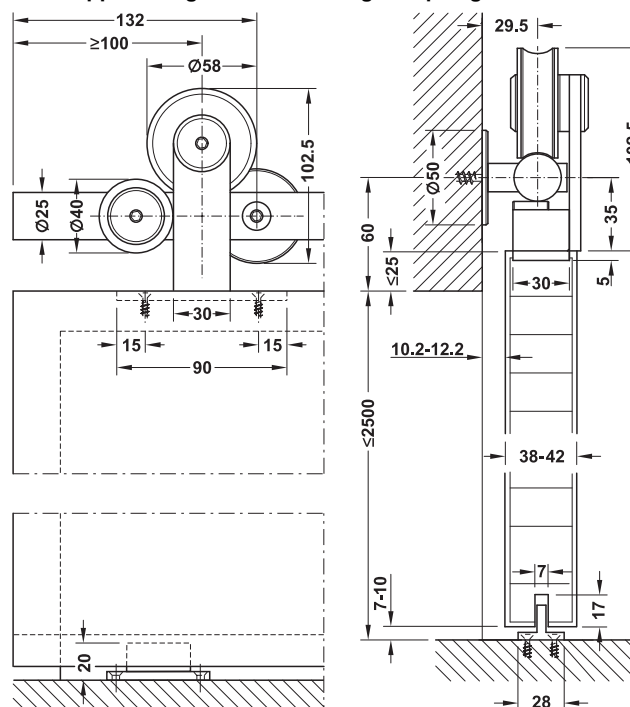
### Doors fastened by positive-fit clamp connection



Wall mounting with wood to metal dowels M8 x 90 mm for wood thicknesses 28 – 34 mm

Wall mounting with wood to metal dowels M8 x 100 mm for wood thicknesses 35 – 42 mm

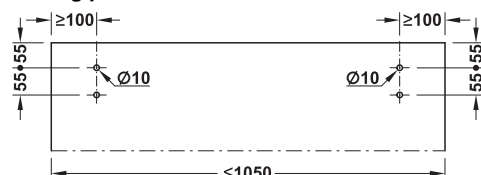
### With support flange for screw fixing to top edge of door



Running gear with support flange

Wall mounting with wood to metal dowels M8 x 90 mm for wood thicknesses 38 – 42 mm

### Drilling pattern



DGH-B-INT 2010, HDE-en, 06/10; Dimensional data not binding. We reserve the right to alter specifications without notice.