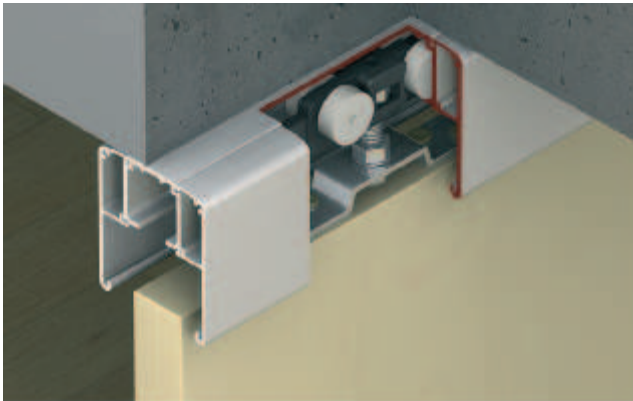
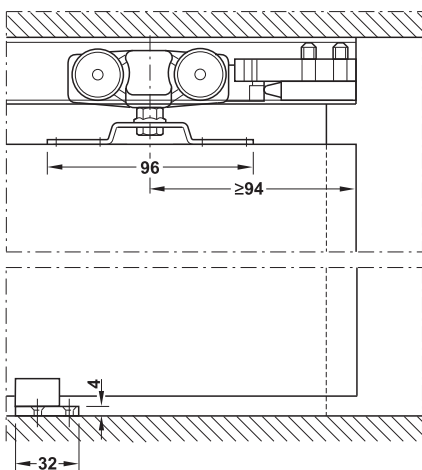


Classic 40-P Sliding door fitting

For door weights up to 40 kg,
screw fixed door connection

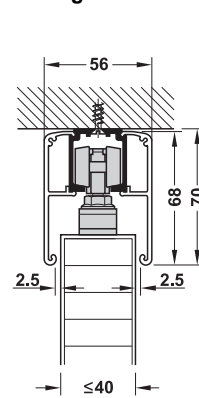


- Area of application: For 1-leaf and 2-leaf sliding doors
- Adjustment facility: Door height adjustable
- Installation: Suspension fitting with screwed-on support flange
- Door weight: ≤40 kg per door

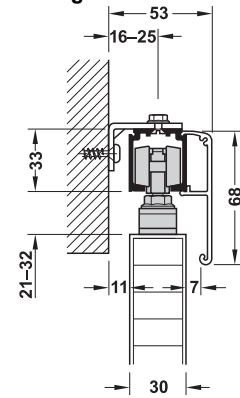


Section trolley hanger and guide

Ceiling installation and wall mounting

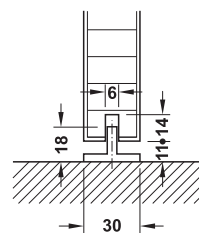


Ceiling installation



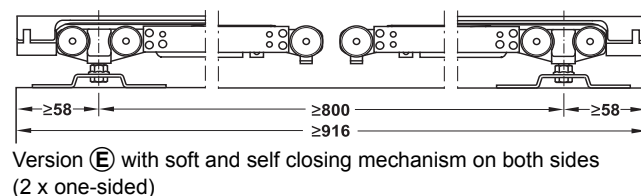
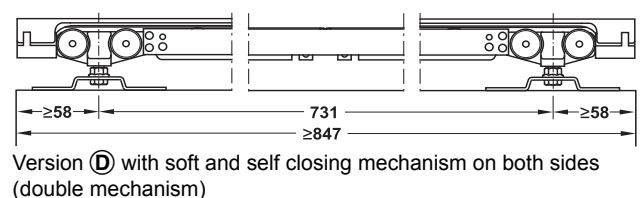
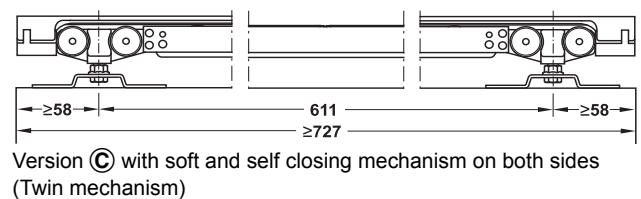
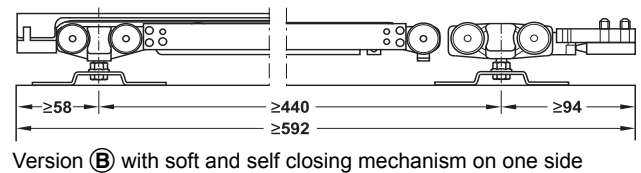
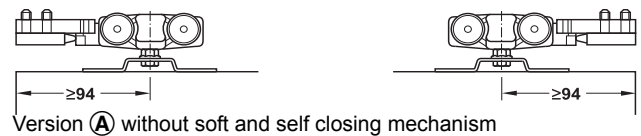
Wall mounting with clip panel and concealed mounting bracket

Floor guides



Standard floor guide

Soft closing versions overview



7

DGH-B-INT 2010, HDE-en, 06/10; Dimensional data not binding. We reserve the right to alter specifications without notice.