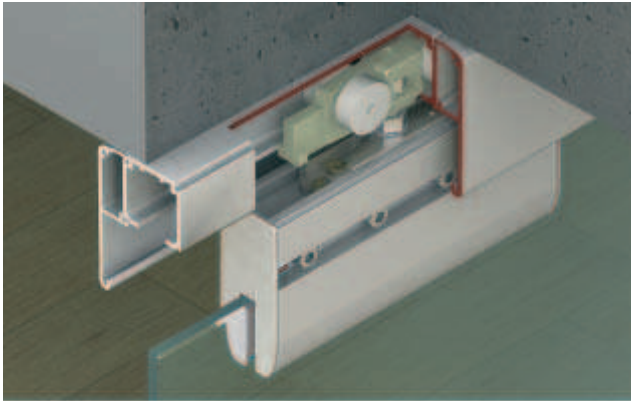


## Classic 60-N Sliding door fitting

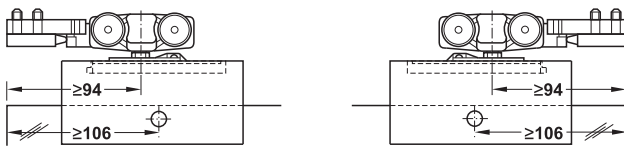
For door weights up to 60 kg,  
clamped door connection



- Area of application: For 1-leaf and 2-leaf sliding doors
- Suitable for: Tempered safety glass
- For glass thickness: Tempered safety glass: 8 or 10 mm
- Adjustment facility: Door height adjustable
- Installation: Suspension with flange clip (without tools)
- Door weight: ≤60 kg per door

7

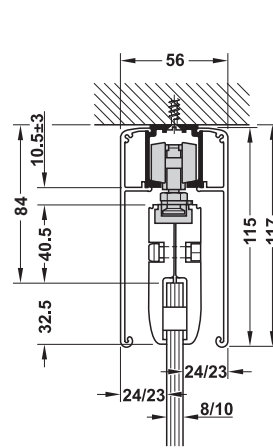
### Soft closing versions overview



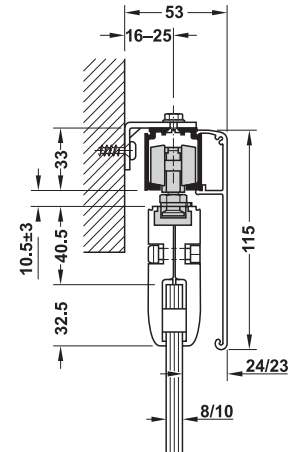
Versions **A1** and **A2** without soft and self closing mechanism

- A1** = glass thickness 8 mm
- A2** = glass thickness 10 mm

### Ceiling installation and wall mounting

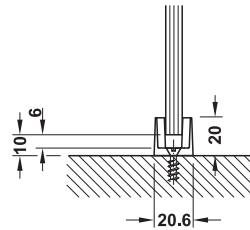


Ceiling installation

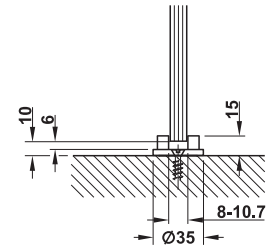


Wall mounting  
with clip panel and  
concealed mounting bracket

### Floor guides



Standard floor guide



Floor guide with zero clearance

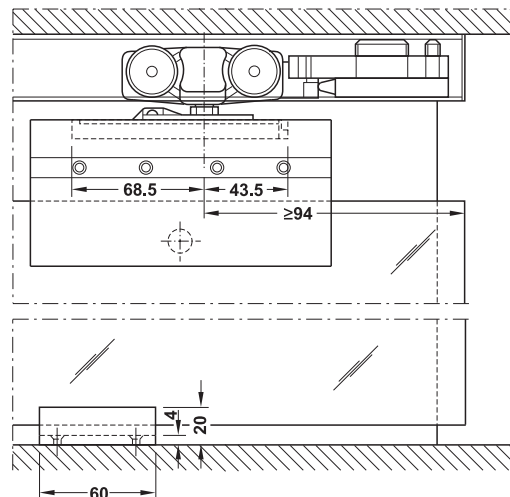
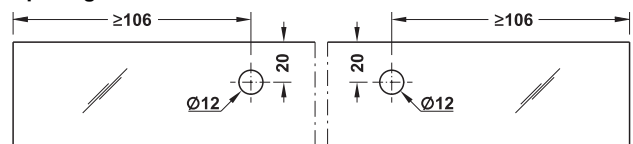
### Installation



Left flange clip

Right flange clip

### Opening size



Section trolley hanger and guide

DGH-B-INT 2010; HDE-en, 06/10; Dimensional data not binding. We reserve the right to alter specifications without notice.